

# 1421J 1461J



## Residential Wall Mount Garage Door Opener

EN - Installation Guide

**Nice**

## Table of Contents

<b>Important Safety Notes</b> .....	<b>4</b>
Instructions for Residential Sectional Type Doors Only .....	4
<b>Product Description and Intended Use</b> .....	<b>5</b>
<b>Technical Specifications</b> .....	<b>5</b>
<b>Product Identification</b> .....	<b>5</b>
Overall Dimensions .....	5
<b>1461J Components</b> .....	<b>6</b>
<b>Accessories</b> .....	<b>6</b>
<b>1421J Components</b> .....	<b>7</b>
<b>Accessories</b> .....	<b>7</b>
<b>Installation</b> .....	<b>8</b>
Check the Door Balance .....	8
Installing the Door Shaft Coupling (GAP13101) .....	8
Securing the 1421J/1461J .....	8
Mounting Position .....	8
Disconnecting the Door from the Motor .....	9
Adjust Length of Cords to Correct Height .....	9
Connecting Accessories and AC Power Supply .....	10
Electrical Connections - Preliminary Checks .....	10
Install the Wall Station .....	11
Mounting the Wall Station .....	11
Connecting the Wall Station .....	11
Install the Safety Beam .....	12
Pre-Adjusting the Beams .....	12
Wiring the Beams .....	13
Installing E-Lock .....	14
E-Lock Manual Operation .....	15
Aligning the Infrared Safety Beam .....	16
Safety Beam Operation .....	16
Adjusting Open and Close Limits .....	16
Set OPEN Limits Using On-board Buttons .....	17
Set CLOSE Limit Using On-board Buttons .....	17
Automatic Door Force Setup .....	17
Safety Reversal System Test .....	17
Connecting the Battery .....	18
Remote Controls .....	18
Programming the Transmitters .....	19
To Add or Remove a Remote or Optional Keypad .....	19
Deleting a Transmitter .....	19
Deleting All Transmitters .....	19
Testing .....	19
Replacing a Remote Control's Batteries .....	19
<b>Setting Up the HAE00080 Connected Wall Station (included with 1461J)</b> .....	<b>20</b>
Test Wi-Fi Signal Strength with Your Smart Phone .....	20
LEDs on the HAE00080 Connected Wall Station (included with 1461J) .....	21
<b>Nice G.O. App Installation</b> .....	<b>21</b>
Download, Register, and Activate Application .....	21
Connect the Opener to the Nice G.O. app .....	21
Pre-Close Safety Warning .....	21
<b>Operating the Garage Door Operator</b> .....	<b>22</b>
Opening the Door .....	22
Closing the Door .....	22
Stopping the Door Mid-travel .....	22
Vacation Lock for Additional Security .....	23
(Wall Station only) .....	23
Controlling the Light Panel .....	23
(Wall Station only) .....	23
<b>Garage Door Maintenance</b> .....	<b>23</b>
After Servicing the Operator .....	23

**Field Reset** ..... 23  
**Troubleshooting** ..... 24  
**FCC & IC Notice** ..... 25  
**Limited Warranty** ..... 25  
**Warning** ..... 25

## Important Safety Notes

### Instructions for Residential Sectional Type Doors Only

Please read the instructions carefully! This garage door operator is designed to provide safe and reliable service if installed and tested as described in these instructions. A garage door is the largest mechanical appliance in a residence. Care must be taken to prevent injury or death during installation and operation of the garage door and garage door operator.

THE FOLLOWING FORMATS ARE USED FOR SAFETY NOTES IN THESE INSTRUCTIONS.



#### WARNING

This type of warning note is used to indicate possible mechanical hazards that may cause serious injuries or death.



#### WARNING

This type of warning note is used to indicate possible electrical shock hazards that may cause serious injuries or death.



#### CAUTION

This type of warning note is used to indicate the possibility of damage to the garage door or garage door operator.

This operator system is equipped with an unattended operation feature. The door could move unexpectedly.

## IMPORTANT INSTALLATION SAFETY INSTRUCTIONS



### WARNING

### TO REDUCE THE RISK OF SEVERE INJURY OR DEATH TO PERSONS, REVIEW THESE INSTALLATION SAFETY STEPS BEFORE PROCEEDING

1. READ AND FOLLOW ALL INSTALLATION INSTRUCTIONS.
2. Install only on a properly balanced residential sectional garage door. An improperly balanced door could result in severe injury or death. Repairs to cables, spring assemblies, and other hardware must be made by a qualified service person before installing the opener.
3. Disable all locks and remove all ropes connected to the garage door before installing the opener. Ropes connected to a garage door can cause entanglement and death.
4. **a)** Install the door operator at least 2.44 m (8 ft) or more above the floor; **OR b)** If the operator must be installed less than 2.44 m (8 ft) above the floor, then exposed moving parts must be protected by covers or guarding, provided by the operator manufacturer; **OR c)** Both **(a)** and **(b)**.
5. Do not connect the opener to the power source until instructed to do so.
6. Locate the Wall Station or push button within sight of the door at a minimum height of 5 feet so that small children cannot reach it. Locate the Wall Station or push button away from all moving parts of the door.
7. Install the User Safety Label on the wall adjacent to the Wall Station or push button.
8. Upon completion of the installation, the door must reverse when it comes in contact with a 1-1/2" high object (or a 2x4 laid flat at the center of the door) on the floor and when the infrared safety beam is blocked.
9. Do not wear watches, rings or loose clothing while installing or servicing an opener. Jewelry or loose clothing can be caught in the mechanism of the garage door or the opener.
10. DISCONNECT THE ELECTRIC POWER FROM THE GARAGE DOOR OPENER BEFORE MAKING ANY REPAIRS OR REMOVING THE COVER.
11. Disconnecting the Door from the Opener: With the door in any position (preferably closed), carefully pull the red release handle. USE CAUTION IF THE DOOR IS OPEN. An open or partially open door may fall rapidly if disconnected from the opener. Do not allow anyone in the path of the door.
12. Use this operator only with sectional overhead door no more than 14 feet tall.

### 13. SAVE THESE INSTRUCTIONS.



## IMPORTANT

**THIS 1421J/1461J OPERATOR INSTALLATION SHOULD ONLY BE INSTALLED BY A QUALIFIED GARAGE DOOR PROFESSIONAL. IT IS THE INSTALLER'S RESPONSIBILITY TO ENSURE ALL AUTOMATED GARAGE DOOR INSTALLATIONS ARE UL-325 COMPLIANT. DO NOT PROCEED WITH THIS INSTALLATION IF YOU ARE NOT TRAINED AND AWARE OF THESE REQUIREMENTS AND GUIDELINES.**

## Product Description and Intended Use

The 1421J/1461J residential opener is intended for use with:

- Standard lift doors up to 14 feet high with 4" to 6" drums
- Vertical lift doors up to 14 feet high
- Sectional doors up to 18 feet wide
- **Doors up to 850lbs**
- Doors with torsion bar with 1" diameter
- Total door area must not exceed 180 square feet

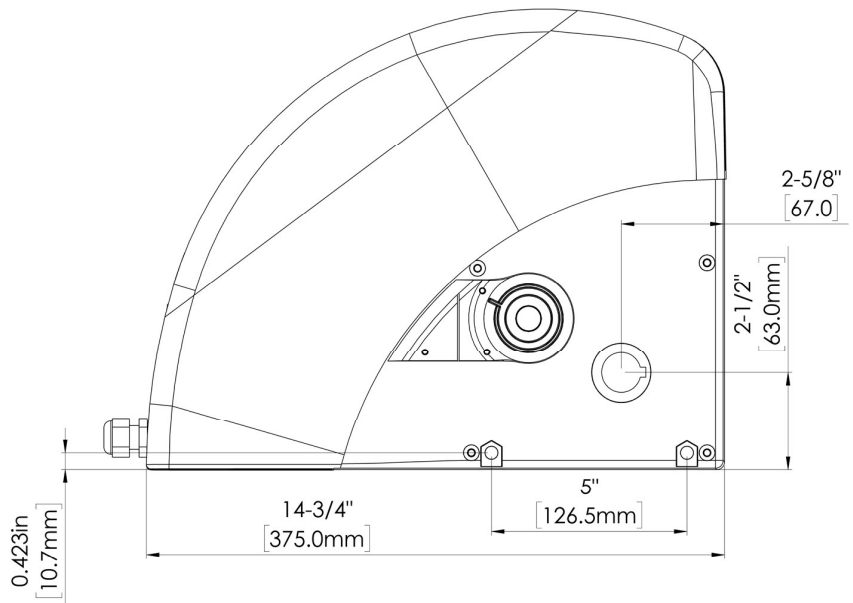
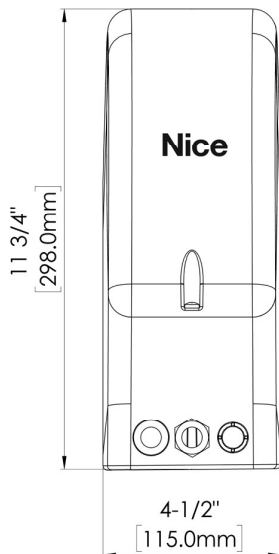
**NOTE:** Not compatible with reverse wound drums.

## Technical Specifications

CODE	DESCRIPTION
1421J-01 1461J-01	24 VDC Motor, with absolute encoder for residential sectional doors up to 14 feet (4.3 meters) in height.
ELECTRICAL DATA	
Power supply (Vac 60 Hz)	115V
Amperage (A)	1.6
Watts (W)	350
PERFORMANCE DATA	
Speed (rpm)	30
Torque	37 ft-lbs (50 Nm)
Duty Cycle	Maximum 10 cycles per hour
DIMENSIONAL AND GENERAL DATA	
Protection level	IP 40
Operating temperature (°F/°C)	-4 to 122°F (-20 to 50°C)
Dimensions	4.5 x 11.7 x 14.8 inches (115 x 298 x 375 mm)
Weight	25 lbs. (11.3 kg)

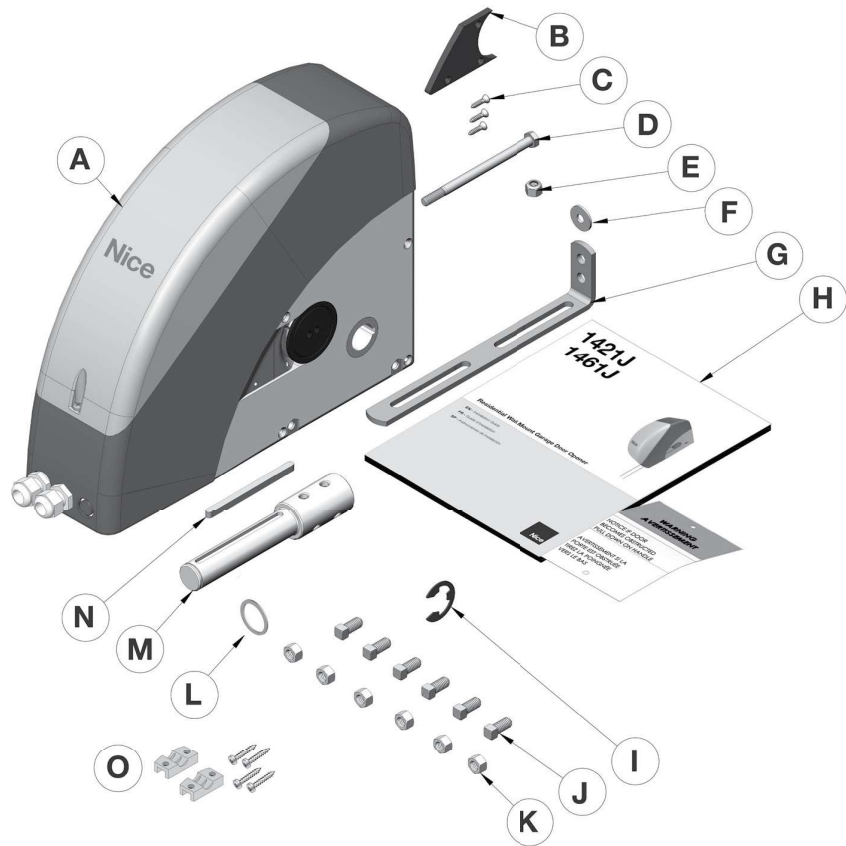
## Product Identification

### Overall Dimensions









## 1461J Components

A	Motor
B	Cover (horizontal installation)
C	3 Self-tapping screws
D	M8 x 130 screw
E	M8 locknut
F	D8 washer
G	Mounting bracket
H	Manuals and safety labels
I	Retaining ring
J	6 x 1/4" square head bolts
K	6 x 1/4" hex nuts
L	Large washer
M	GAP13101 Adapter
N	Machine key
O	Cable anchors (2), screws (4)

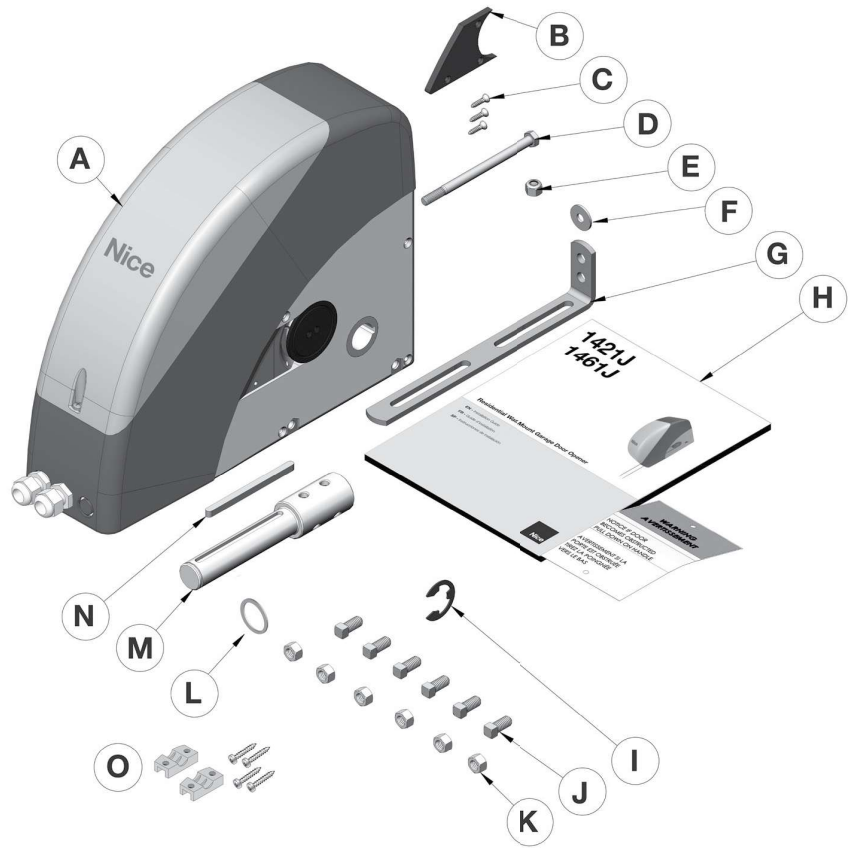


## Accessories








 <p><b>HAE00080</b> Wall Station Pc./Pack 1 Set</p>	 <p><b>MTS3</b> 3 Button Remote Transmitter Pc./Pack 1</p>	 <p><b>HAE00079</b> Optical Safety Beam Assembly Pc./Pack 1</p>	 <p><b>OXIMGC/A</b> (pre-installed in motor) MegaCode Receiver Pc./Pack 1</p>
 <p><b>MV00529</b> E-Lock Pc./Pack 1</p>	 <p><b>PS124/US</b> (pre-installed in motor) Battery Backup Pc./Pack 1</p>	<p><b>Not included</b></p>  <p><b>DNT00094</b> Keypad</p>	

## 1421J Components

A	Motor
B	Cover (horizontal installation)
C	3 Self-tapping screws
D	M8 x 130 screw
E	M8 locknut
F	D8 washer
G	Mounting bracket
H	Manuals and safety labels
I	Retaining ring
J	6 x 1/4" square head bolts
K	6 x 1/4" hex nuts
L	Large washer
M	GAP13101 Adapter
N	Machine key
O	Cable anchors (2), screws (4)



## Accessories

 <p><b>HAE00088</b> Wall Button Pc./Pack 1 Set</p>	 <p><b>MTS3</b> 3 Button Remote Transmitter Pc./Pack 1</p>	 <p><b>HAE00079</b> Optical Safety Beam Assembly Pc./Pack 1</p>	 <p><b>OXIMGC/A</b> (pre-installed in motor) MegaCode Receiver Pc./Pack 1</p>
 <p><b>MV00529</b> E-Lock Pc./Pack 1</p>	 <p><b>PS124/US</b> (pre-installed in motor) Battery Backup Pc./Pack 1</p>	<p><b>Not included</b></p>  <p><b>DNT00094</b> Keypad</p>	

# **IMPORTANT: 1421J/1461J must be installed with the door CLOSED.**

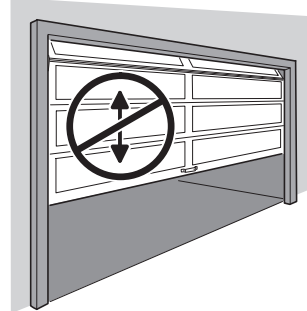
## Installation

1

### Check the Door Balance

- 1) From outside the garage, slowly open the door all the way and then close it all the way. Notice if there is any binding, sticking or rubbing. The door should move smoothly in both directions.
- 2) Raise the garage door up about halfway. Carefully release the door to see if the door balances. It should stay in place.
- 3) Close the door.

**IMPORTANT:** If the garage door is unbalanced or the door travel isn't smooth, have a qualified garage door professional adjust or repair the door.

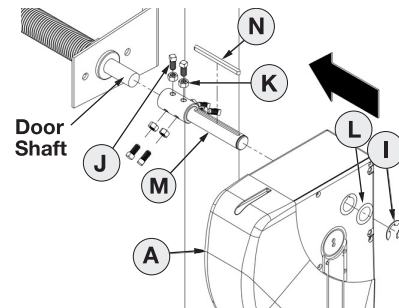


2

### Installing the Door Shaft Coupling (GAP13101)

**IMPORTANT: 1421J/1461J must be installed with the door closed.**

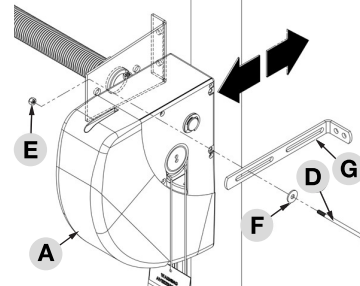
- 1) Slide the shaft coupling (M) onto the Door Shaft, then couple the six 1/4" square head bolts (J) with the six 1/4" Hex Nuts (K) and tighten.
- 2) Set the Machine Key (M) onto the coupling.
- 3) Rotate the shaft to align the keyway and the keyseat, then insert the coupling into the output shaft on the motor (A). Finish by first adding washer (L), followed by the retaining ring (I) on the end of the coupling.



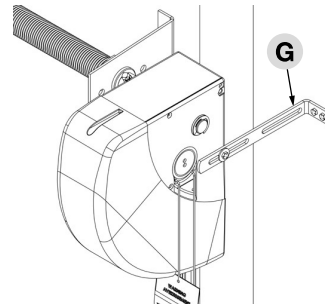
3

### Securing the 1421J/1461J

- 1) Position the 1421J/1461J so that it is parallel to the wall, then fasten the bracket (G) to the motor (A) using the bolt (D), washer (F) and nut (E) provided.



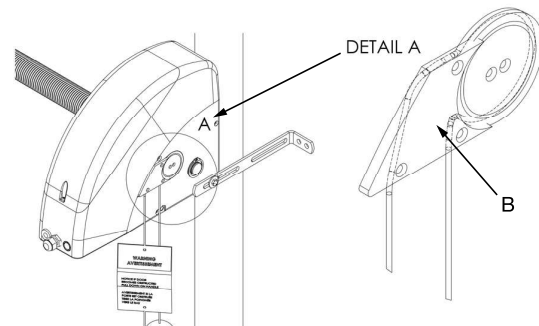
- 2) Fasten the bracket (G) to the wall using wall plugs suited to the wall's material (not provided).



4

### Mounting Position

- 1) The 1421J/1461J can be installed in the horizontal position using the release mechanism supplied with the kit. It should be fastened with the three screws in the position shown, ensuring that the unlocking cables are fed through.



**5****Disconnecting the Door from the Motor**

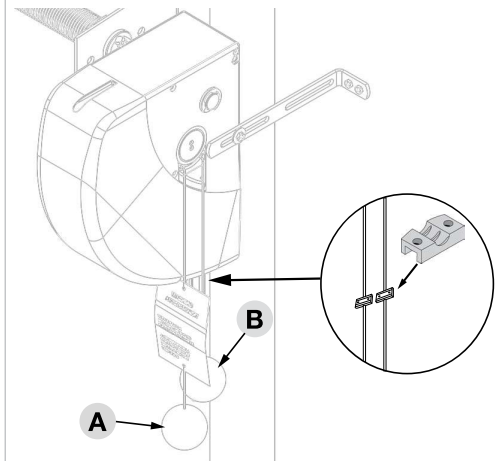
The motor is equipped with a mechanical unlocking disconnect device that can be used to open and close the door manually.

Manual operation should only be performed in the event of a power outage, malfunctions during the installation process or when performing routine operator maintenance.

To disconnect the motor:

- 1) It is preferable for the garage door to be fully closed.
- 2) Disengage E-Lock (when installed) by sliding the manual release to the open position.
- 3) Pull the red disconnect handle (A) on 1421J/1461J. The door can now be opened and closed manually.
- 4) To reconnect the motor, pull the gray handle (B).
- 5) Secure disconnect handles to the wall with included Cable Anchors (A and B) to prevent entanglement. Ensure that cable anchors are installed at least 12" above disconnect balls and do not obstruct the operation of the disconnect mechanism.

The E-Lock will automatically re-engage the next time door is operated electrically.

**Adjust Length of Cords to Correct Height**

- 1) Open disconnect handle by using a flathead screwdriver to separate the two halves.



- 2) Cut the Disconnect Cord so that it's within reach, but at least 6 feet (1.83 m) above the floor.
- 3) With the top half of the handle on the cord, tie a knot at the bottom to ensure handle is held in place.
- 4) Reattach bottom half of handle and repeat above steps for other handle.
- 5) Ensure the grey handle is located behind the red handle.



6

## Connecting Accessories and AC Power Supply

### **⚡ WARNING ⚡**

To prevent electrocution or fire, installation and wiring must be in compliance with local electrical and building codes.

### **⚡ WARNING ⚡**

To reduce the risk of electric shock, this operator has a grounding pin. This plug will only fit into a grounding type outlet. If the plug doesn't fit into the outlet, contact a qualified electrician to install the proper outlet. Do not change the plug in any way.

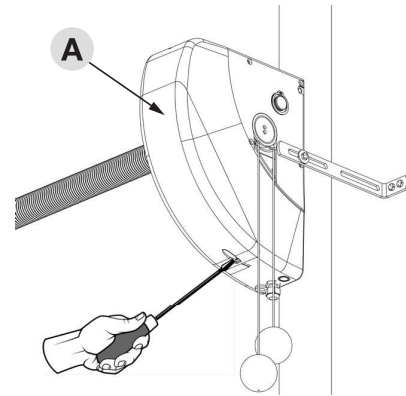
### Electrical Connections - Preliminary Checks

**⚡** All electrical connections must be made with the system disconnected from the main electricity and back-up battery disconnected.

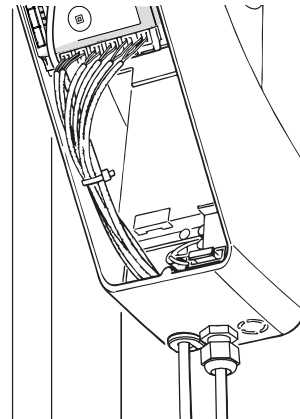
**!** The connection operations must only be carried out by qualified personnel.

To make the electrical connections:

- 1) Loosen (but do not attempt to remove) the retaining screw, and then open the protective cover (A) by lifting up.
- 2) The protective cover may be removed for easier access to connections. To remove, gently squeeze the two white hinges together. Ensure that the protective cover is reinstalled after installation is complete and before power is connected.



- 3) Insert the accessory cables into the appropriate terminals (detailed on the following pages), leaving them 8 to 12 inches (20-30 cm) longer than necessary. Terminals are removable for easier installation.
- 4) After connecting the accessory cables, use a cable tie (not included) to hold the cables entering the motor together, then place a second cable tie slightly above the cable entry hole.



7

## Install the Wall Station/Wall Button

### ⚠ WARNING ⚠

Children operating or playing with the garage door operator can injure themselves or others. The garage door could cause serious injury or death. Do not allow children to operate the remote control(s) or the wall station/wall button. Install the wall station/wall button out of reach of children and away from all moving parts of the door. The door must be clearly visible from the wall station/wall button. A moving garage door could injure someone under it. Only activate the door when properly adjusted, when it can be seen clearly and when there are no obstructions to the door travel.

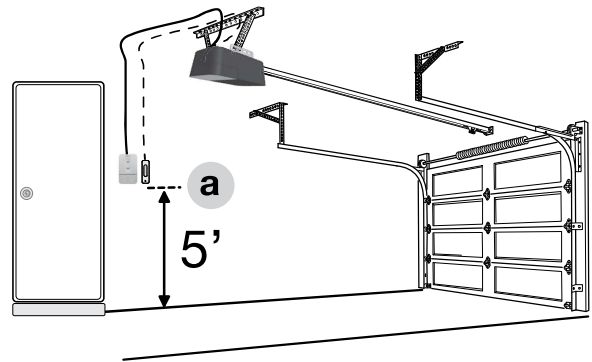
**NOTE:** 22 AWG 2-conductor wall station and is supplied with the operator. Use the installation's pre-wiring to install the safety beam wire. For additional wire, contact Nice Tech Services for information regarding the 24-pack Model HAE00009 wire and wire clip kit.

**UL NOTE:** All low voltage Class 2 cable used with this operator must be UL Listed Type CL2, CL2P, CL2R or CL2X or other cable with the equivalent or better electrical, mechanical and flammability ratings.

### Locate Wall Station/Wall Button

Use the screws provided to mount the wall station/wall button near an access door at a minimum height of 5 feet. (See the **WARNING** (above) that expresses the importance for the minimum height.)

- 1) Measure the location for the wall station/wall button at least 5 feet above the floor level (a).



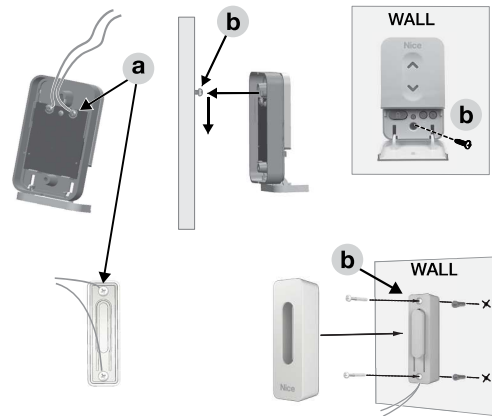
### Mounting the Wall Station/Wall Button

- 1) Strip back 1/2" of insulation, and connect a wire to each of the two terminals on the back of the wall station or wall button (a).

**NOTE:** For non-prewired installations, route the wire (supplied) to the back of the operator. use insulated staples (not supplied) to secure the wire. Staples must straddle both wires to avoid electrical shorts. The wall station/wall button is also sized to mount on a standard single gang box.

- 2) **Wall Station:** Mount the first screw in the location desired, then hang the wall station. Securely mount the wall station with the bottom screw (b).

**Wall Button:** Measure and insert wall anchor (if needed). Mount the wall button to the wall using the provided screws. Snap the button cover into place.



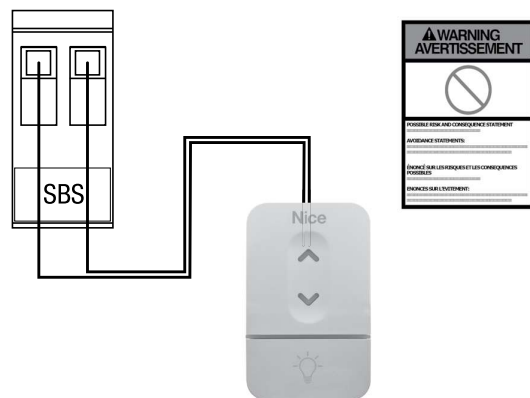
### Connecting the Wall Station/Wall Button

- 1) Cut the wall station/wall button wire about 8"-12" longer than needed to reach the operator terminals. Strip back 1/2" of insulation.
- 2) Connect the wires of the wall station/wall button to terminals SBS in the operator.
- 3) Ensure factory-installed jumper on STOP terminals is in place.
- 4) Apply the User Safety Instruction Label to the wall next to the wall station/wall button. Use staples or tacks to help the label remain in place over time.

**IMPORTANT:** DO NOT PLUG THE OPERATOR IN AT THIS TIME!

### ⚠ WARNING ⚠

Persons, particularly children, could be killed by a closing garage door without a properly installed and adjusted safety beam optical obstacle sensing system.



8

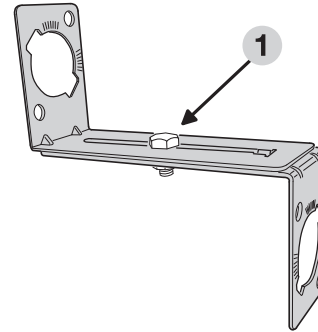
## Install the Safety Beam

**NOTE:** The safety beam's infrared light beam must not be obstructed by the door, or by any part of the door hardware. Use wooden spacers between the beam brackets and wall if necessary to create proper clearance.

### **⚠ WARNING ⚠**

**To protect small children, do not install the safety beam higher or lower than instructed.**

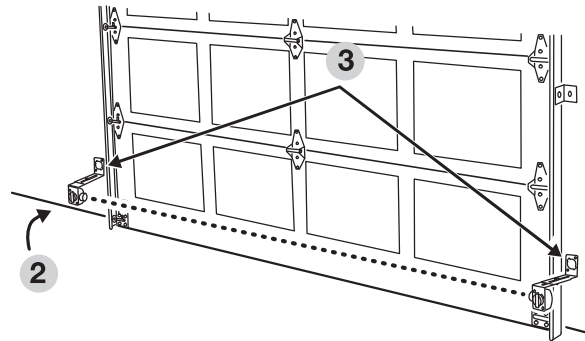
1) Assemble the two safety beam brackets from the four L-shaped brackets using two 1/4"-20 x 3/4" bolts and 1/4"-20 keps nuts (one nut & bolt for each bracket).



2) Position the assembled brackets on each side of the door **so the center line of the safety beam lenses will be 5-1/2" above the floor**. Use the index marks on the brackets to make the bracket assemblies equal lengths.

3) Mark the locations for the bracket mounting screws.

**NOTE:** The safety beam receiver (the unit with two indicators) should be located on the "shady" side of the door to prevent sunlight from shining directly into the receiver's lens.



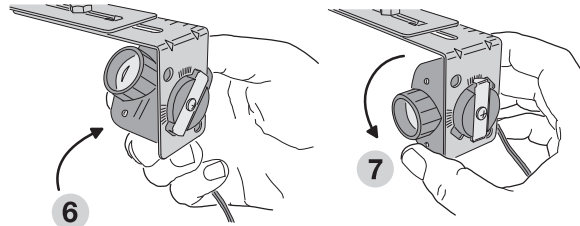
4) Drill two 3/16" pilot holes for lag screws at marks.

5) Mount the brackets with two 1/4" x 1-1/4" lag screws, and tighten them with a 7/16" socket.

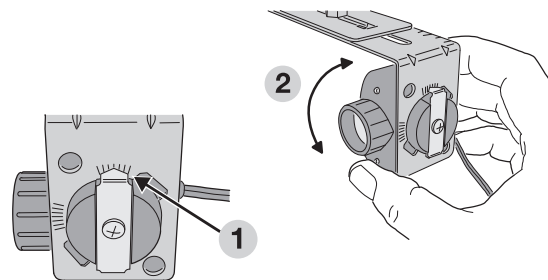
6) Insert the sender and receiver into the bracket holes, so the lenses of the units will face each other.

7) Twist the units until the spring clips lock into a detent mark on the brackets. To protect the units from being bumped after installation, it's recommended to mount the sender and receiver inside the brackets as shown.

**IMPORTANT:** Be careful to route the safety beam wiring away from any moving parts of the door or operator.

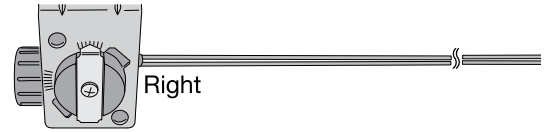


## Pre-Adjusting the Beams

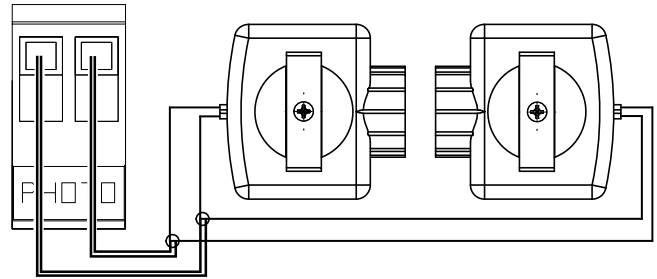


## Wiring the Beams

- 1) For non-prewired installations, route the wire from the beam (on the side of the door opposite 1421J/1461J) up the wall above the door hardware, then across the door to the motor. Route the wire of the other beam (on the same side of the door as 1421J/1461J) up the wall to the motor. Cut the wires 8" -12" longer than needed to reach the operator terminals. Strip back 1/2" of insulation from the ends of the wires.
- 2) Secure all the wires to the wall with insulated staples (not supplied). Staples must straddle both wires to prevent shorts.



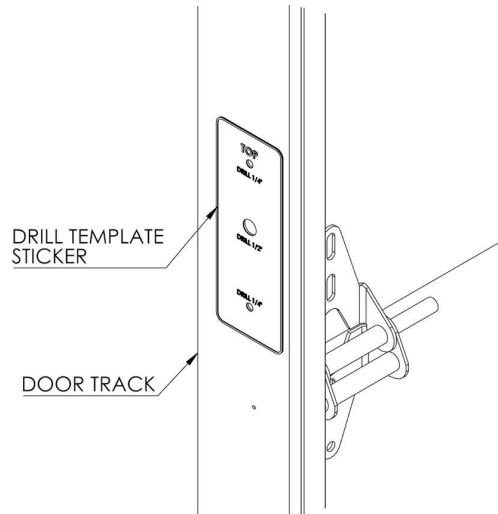
- 3) At the operator, twist one wire from each pair together, then twist the other wire from each pair together.
- 4) Attach each twisted connection to PHOTO terminals in the operator.



9

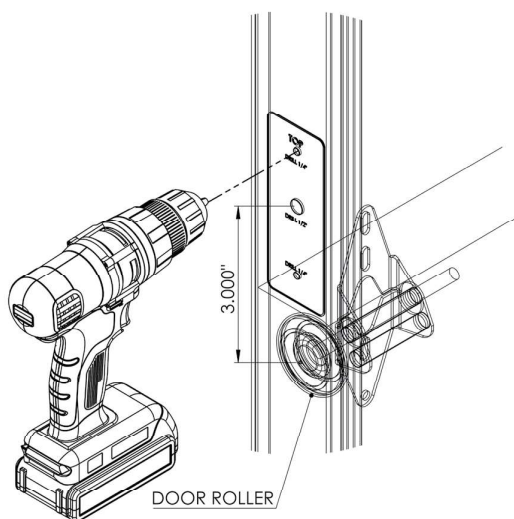
### Installing E-Lock

- 1) Position the drill template sticker in the middle of the door track, on the side of the door that the motor is installed.
- 2) Ensure the center 'Drill 1/2"' mark is approximately 3 inches above a roller, and ensure that the label 'TOP' is oriented in the correct direction.

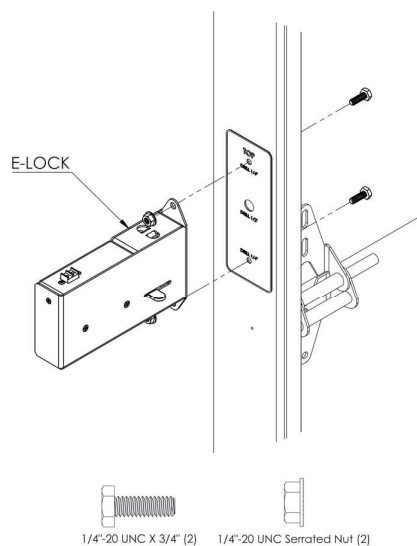


- 3) Drill through the door track using the correct drill sizes indicated on the sticker.

**Note:** It is recommended to use a Step Drill bit.



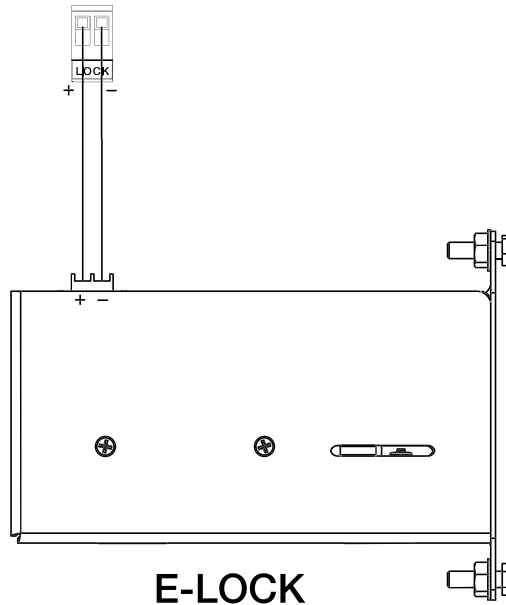
- 4) Assemble with the nuts and bolts provided (as shown in the exploded diagram).



- 5) Connect the E-Lock wires to the LOCK terminals in the operator.

The E-Lock is polarity sensitive, please ensure that polarity indications are followed when wiring.

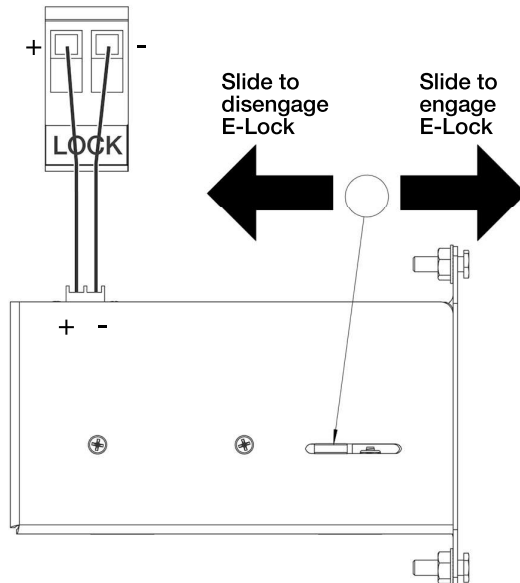
**NOTE:** The operator may now be connected to power. Connect power to the opener, and connect the AC power supply to the wall receptacle.



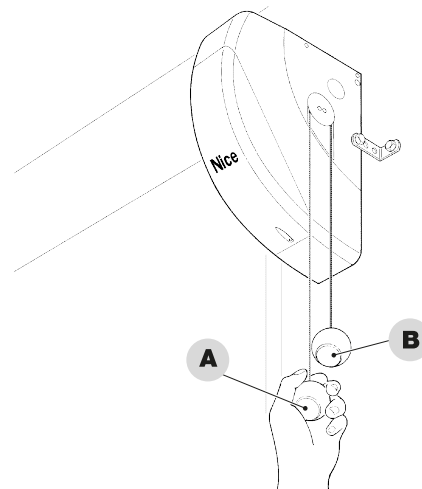
### E-Lock Manual Operation

It is preferable for the garage door to be fully closed.

- 1) Disengage E-Lock by sliding the manual release to the open position.



- 2) Pull the red disconnect handle (A) on the 1421J/1461J. The door can now be opened and closed manually.
- 3) To reconnect the motor, pull grey handle (B). The E-Lock will re-engage when the garage door has closed by using the Wall Station/Wall Button.



10

### Aligning the Infrared Safety Beam

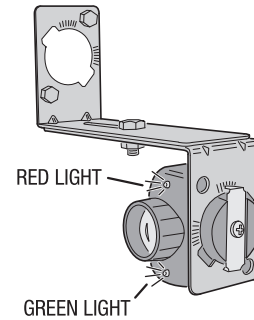
The safety beam has two components, a sender and a receiver. The sender produces a narrow infrared beam that travels across the bottom of the door opening to the infrared receiver. If an object blocks the infrared beam while the door is closing, the door will stop, then reverse and fully open (the operator's light will flash three times). **As a safety feature, the operator will ignore signals from all remote controls if the door is open and the infrared safety beam is blocked or out of alignment. In this case, the door can be forced closed by pressing and holding the Wall Station's up/down arrow pushbutton (be sure the door area is in clear view).**

**⚠ WARNING ⚠**  
 With the door closed, disengage the motor from the torsion bar during these alignment tests by pulling the red release handle. After tests are completed, reconnect motor by pulling the grey reconnect handle.

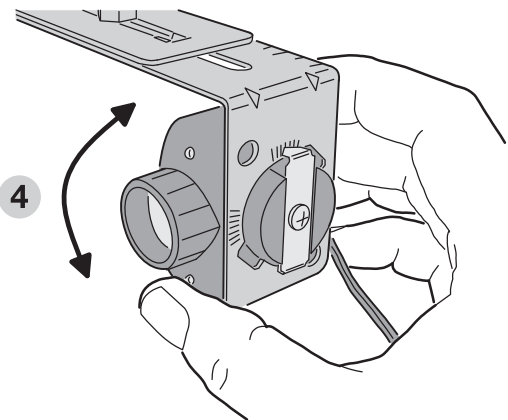
**⚠ WARNING ⚠**  
 Serious injury or death from a closing garage door may result because of failure to test and adjust safety reverse system. Repeat this test monthly and adjust as needed.

#### Safety Beam Operation

1) Check that the operator has power. The green lights on the sender and receiver should be lit.



- 2) If the receiver's green light is on (but the red light is off) the receiver has power, but it's not detecting the infrared beam from the sender. The red light may flash when the beam is partially detected. This can be caused by misalignment or something blocking the beam. Adjust the safety beam sender and receiver while watching the receiver's red light (stay out of the beam while aligning it).
- 3) When the red light stays on, rotate the sender towards the ceiling and stop when the red light on the receiver begins to flicker.
- 4) Rotate the sender back toward a horizontal position with the floor and stop as soon as the red light on the receiver lights solid. The beam is now properly aligned.



SAFETY BEAM INDICATOR TABLE	
Green On	Power On
Green Off	Power Off
Red On	Beam OK - No blockage
Red Off	Beam blocked or Misaligned
Red Flashing	Beam aligned poorly

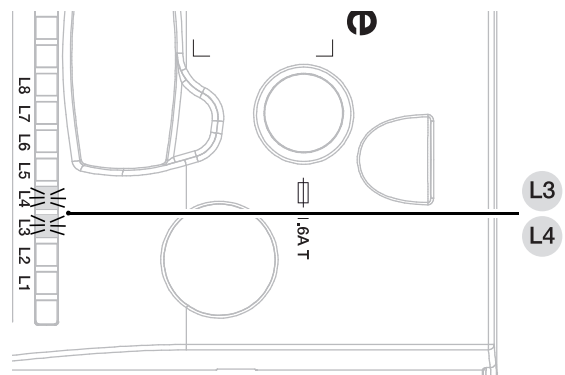
**NOTE:** If the receiver's red light remains off, check for: **1)** Dirt on the receiver's lens, **2)** Sunlight shining into the receiver's lens, **3)** A short in the safety beam wiring (from staples or at the operator terminals).

11

### Adjusting Open and Close Limits

**IMPORTANT:** LIMITS MUST BE SET WITH THE DOOR IN THE FULL CLOSE POSITION

When power is ON and photocells are aligned, LEDs L3 and L4 will flash every second. This indicates that the operator is ready for Limit Setup.



12

PROGRAMMING MODE	
L3 + L4 Flashing	Limit Set Mode
L8 Flashing	Open Limit Set Mode
L1 Flashing	Close Limit Set Mode
L6 Flashing	Auto door force must be performed

### Set OPEN Limits Using On-board Buttons

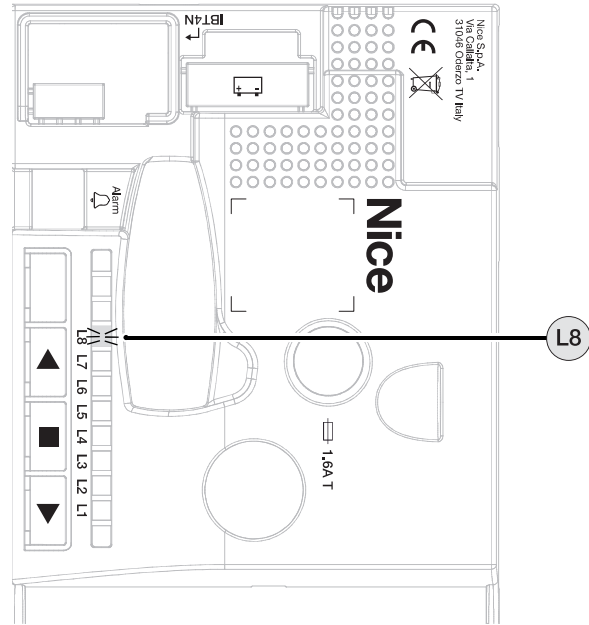
If no action is performed for 10 seconds while setting the Open or Close Limits, the operator returns to Limit Set mode. The Courtesy light remains OFF during the Limit Setting procedure.

- To set the Open Limit, hold **■** and **▲** for 3 seconds. L8 begins flashing indicating operator is in Open Limit set mode.
- Press and hold **▲** or **▼** to move the door to the fully open position.
- Hold **■** for 5 seconds to confirm the open position.
- After setting Open Limit, L1 begins flashing indicating operator is in Close Limit set mode.

### Set CLOSE Limit Using On-board Buttons

- Press and hold **▲** or **▼** until door is in the fully closed position.
- Hold **■** for 5 seconds to confirm the closed position.

Once both limits are set, L6 will flash, indicating the automatic door force setup must be performed.

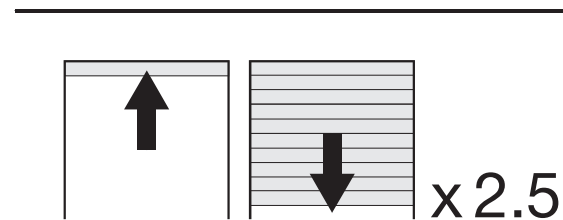


13

**⚠ WARNING ⚠**  
**Door completes 2.5 cycles during Automatic Door Force setup**

### Automatic Door Force Setup

- 1) Ensure L6 is flashing.
- 2) Press the **▲** button or use the wall station to open the door. The door will then complete two and a half cycles. After completing the two and a half cycles, the door will return to the fully open position and L8 will remain lit.



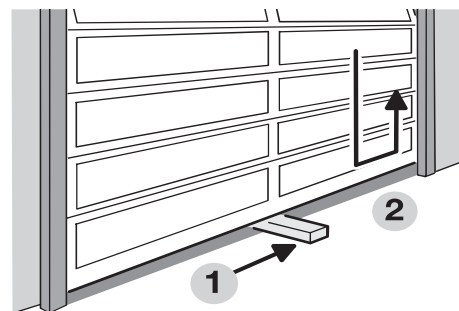
14

### Safety Reversal System Test

The operator determines that if there is an obstruction if a higher than expected amount of force is detected during a door cycle. If an obstruction is encountered during a closing cycle, the operator and door will stop then fully open. If an obstruction is encountered during an opening cycle, the operator and door will stop.


- 1) Lay a 2 x 4 board flat on the floor where it will be struck by the **center** of the door as it closes.
- 2) Verify that the door reverses when it strikes the board. The door **must** reverse within two seconds after striking the board.

**⚠ WARNING ⚠**  
**Always perform the Safety Reversal System Test after making any adjustments to the operator. PERFORM THE SAFETY REVERSAL SYSTEM TEST MONTHLY!**

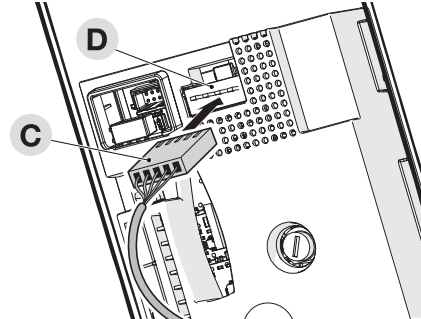


15

## Connecting the Battery

 The electrical connection of the battery to the control unit must be made only after completing all the installation and programming stages, because the battery is an emergency power supply.

- 1) Insert the battery cable (C) into the battery terminal (D) on the main control board.



16

## Remote Controls

The operator is supplied with a three-button remote control (the second and third buttons can be used to control an additional operator or gate if it contains a Nice/Linear MegaCode® receiver). Additional single and multi-button remote controls, keypads, and external receivers can be purchased.

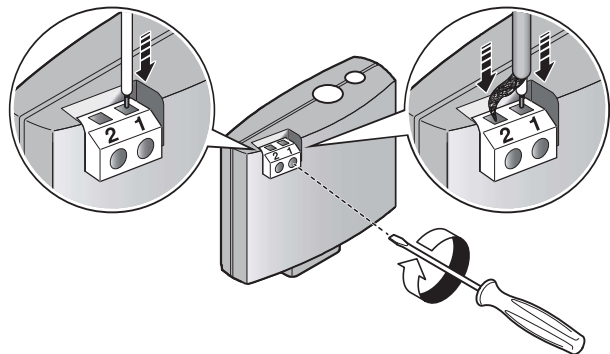
### **WARNING**

**Children operating or playing with a garage door operator can injure themselves or others. The garage door could cause serious injury or death. Do not allow children to operate the remote control(s) or the Wall Station. A moving garage door could injure or kill someone under it. Activate the operator only when the door is clearly visible, free of obstructions and adjusted properly.**

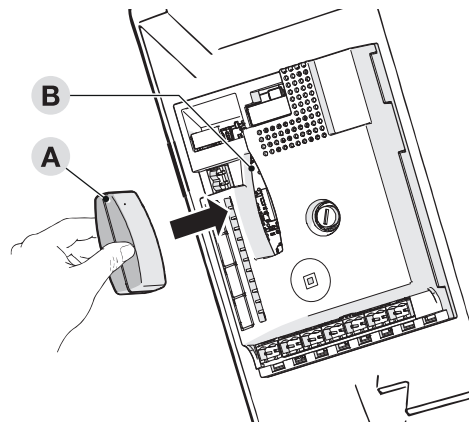
**The 1421J/1461J comes with a MegaCode radio receiver pre-installed.**

To replace a receiver:

- 1) Connect the antenna supplied to Terminal 1 of the receiver, as shown. Alternatively, if the radio signal reception must be improved through the installation of an external antenna with a coaxial cable with 50Ω impedance (type RG58), the coaxial cable must be connected directly to terminals 1 and 2 of the receiver.



- 2) Insert the receiver (A) in the appropriate slot (B) on the control unit's electronic board.



## Programming the Transmitters

**NOTE:** Once LED B is illuminated RED the transmitter must be paired within 15 seconds. If the RED LED is no longer illuminated, return to step 1.

### To Add or Remove a Remote or Optional Keypad

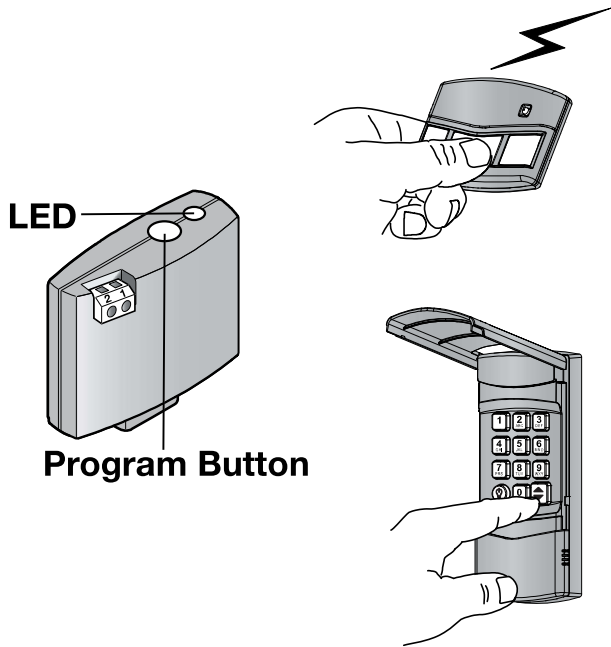
- 1) Hold the Program button for 1 second. The LED will flash red once and turn on for approximately 15 seconds. **A remote button or keypad 1-6 digit code must be added while the red light is on.**
- 2) Press and hold the desired remote button or keypad's transmitter button (⬠). The LED will flash green 4 times. The green light will then turn OFF indicating the pairing process is complete.
- 3) Repeat steps 1 and 2 to add additional transmitters.

### Deleting a Transmitter

- 1) Hold the Program button for one second. The LED will flash red once and turn on for approximately 15 seconds.
- 2) Press and hold the remote or keypad transmitter button for 10 seconds. Then release the button.
- 3) The LED will flash red 3 times, indicating the transmitter has been deleted.

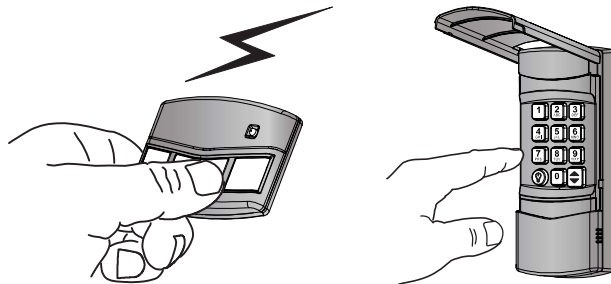
### Deleting All Transmitters

- 1) Hold the Program button for 10 seconds.
- 2) The LED will flash red 3 times, indicating that all transmitters have been deleted.



### Testing

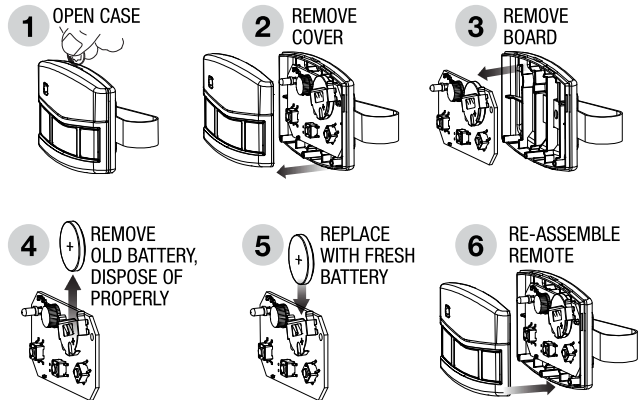
**Stand clear of the door**, press the remote or keypad control button and verify that the operator starts. **PRESS THE REMOTE CONTROL BUTTON AGAIN TO STOP THE DOOR MID-TRAVEL.**



### Replacing a Remote Control's Batteries

When the BLUE light on the remote glows dimly, or fails to light at all when the remote is activated, the batteries need replacing. Follow the steps in the illustration.

#### REPLACING REMOTE BATTERY



**⚠ WARNING ⚠**

- **INGESTION HAZARD:** This product contains a button cell or coin battery.
- **DEATH** or serious injury can occur if ingested.
- A swallowed button cell or coin battery can cause Internal Chemical Burns in as little as 2 hours.
- **KEEP** new and used batteries **OUT OF REACH** of **CHILDREN**.
- Seek immediate medical attention if a battery is suspected to be swallowed or inserted inside any part of the body.



- Remove and immediately recycle or dispose of used batteries according to local regulations and keep away from children.
- Do NOT dispose of batteries in household trash or incinerate.
- Even used batteries may cause severe injury or death.
- Call a local poison control center for treatment information.
- Only use this product with CR2032 type batteries.
- A statement indicating the nominal battery voltage.
- This product uses non-rechargeable batteries and are not to be recharged.
- Do not force discharge, recharge, disassemble, incinerate or heat above specified operational temperature. Doing so may result in injury due to venting, leakage or explosion resulting in chemical burns.
- Ensure the batteries are installed correctly according to polarity (+ and -).
- Do not mix old and new batteries, different brands or types of batteries, such as alkaline, carbon-zinc, or rechargeable batteries.
- Remove and immediately recycle or dispose of batteries from equipment not used for an extended period of time according to local regulations.
- Always completely secure the battery compartment. If the battery compartment does not close securely, stop using the product, remove the batteries, and keep them away from children.

**18**

## Setting Up the HAE00080 Connected Wall Station (included with 1461J)

This Wall Station controls operation of the door and light using the buttons. When paired with the Nice G.O. smartphone app, you can control the garage door(s) from any location, invite and manage other users' app and operator access, control the lights, schedule operator events and be alerted of all garage door activities.

### Requirements

To use with the app you will need:

- a **Wi-Fi network with Internet connectivity,**
- a **strong Wi-Fi signal in the garage where you are installing the Wall Station and**
- an **Android or iOS phone.**

### Test Wi-Fi Signal Strength with Your Smart Phone

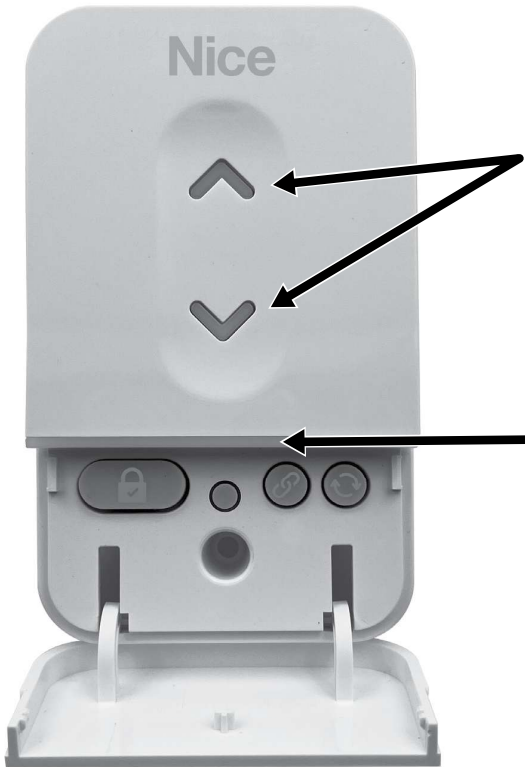
If you have 2 or 3 bars on your phone from the Wi-Fi network, the signal is strong and you can proceed. If not, use one of these options to extend your Wi-Fi network's range.

- **Move your Wi-Fi router closer to the garage.**
- **Purchase a Wi-Fi range extender.**



The Wi-Fi Wall Station must receive a strong signal from your home's Wi-Fi router to work.

## LEDs on the HAE00080 Connected Wall Station (included with 1461J)



The Wall Station has two LEDs that convey information at a glance. The top LED provides information on the vacation mode.

### Vacation Mode LED

ON	Normal operation. Vacation mode disabled.
FLASHING	Vacation mode enabled.

The bottom LED indicates the state of the Wi-Fi connection and device.

### Wi-Fi Connectivity LED

RED - Solid	Not paired, not connected to access point
RED - Blinking Fast	Pairing Mode
BLUE - Blinking slowly	Paired but unable to connect to the internet.
MAGENTA - Blinking fast	Over the air update
MAGENTA - Solid	Over the air reboot
YELLOW - Blinking fast	Unable to connect to Wi-Fi

19

## Nice G.O. App Installation

### Download, Register, and Activate Application

Use the homeowner's smart phone or tablet to visit your app store to download and install the Nice G.O. application. On initial use, you'll be asked to register using the **Create account** option. Once complete, sign in with the new account information (QR Code available below).

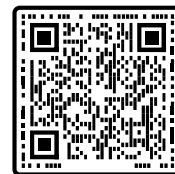
### Connect the Opener to the Nice G.O. app

Stand near Wi-Fi Wall Station. On the mobile device in the Nice G.O. app, tap the plus sign at the bottom right of screen to Connect Your Device. Follow directions in app to Connect Your Device.

### Pre-Close Safety Warning

Once a Wall Station is paired with the Nice G.O. app, the operator will emit a pre-close warning with a buzzer and flashing light before the door closes. This safety alert applies to all close commands, including those from the Nice G.O. app, wall station or transmitter. To disable the pre-close warning:

1. Delete the device from the Nice G.O. app.
  2. Perform a power cycle of the motor.
- If a battery backup is present, ensure it is disconnected before power cycling.



Scan for app instructions.



## Operating the Garage Door Operator

### IMPORTANT USER SAFETY INSTRUCTIONS



**WARNING**

#### A MOVING GARAGE DOOR CAN CAUSE INJURY OR DEATH! TO REDUCE THE RISK OF DEATH OR SEVERE INJURY:

1. READ AND FOLLOW ALL INSTALLATION INSTRUCTIONS.
  2. NEVER LET CHILDREN OPERATE, OR PLAY WITH DOOR CONTROLS! KEEP REMOTE CONTROL AWAY FROM CHILDREN!
  3. Always keep moving door in sight and away from people and objects until it is completely closed. NO ONE SHOULD CROSS THE PATH OF THE MOVING DOOR.
  4. NEVER GO UNDER A STOPPED, PARTIALLY OPEN DOOR.
  5. Test door operator monthly. The garage door MUST reverse on contact with a 1-1/2 inch object (or a 2x4 board laid flat at the center of the door) on the floor. If adjusting either the force or the limit of travel, re-test the door operator. Failure to adjust the operator properly may cause severe injury or death.
  6. If possible, use the red emergency release handle only when the door is closed. Use caution when using this release with the door open. Weak or broken springs may cause the door to fall rapidly, causing injury or death.
  7. KEEP GARAGE DOORS PROPERLY BALANCED. (See **Garage Door Operator Maintenance, page 21**.) An improperly balanced door could cause severe injury or death. Have a qualified service person make repairs to cables, spring assembly and other hardware.
  8. This operator system is equipped with an unattended operation feature. The door could move unexpectedly. NO ONE SHOULD CROSS THE PATH OF THE MOVING DOOR.
- 9. SAVE THESE INSTRUCTIONS.**

#### Opening the Door

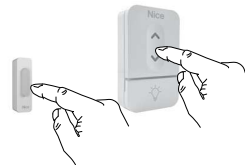
With the door in view, press the Wall Station/Wall Button, or the button assigned to the operator on the remote control, or enter a valid access code and press START/STOP on a remote keypad.

When the operator is activated, the operator's light will turn on and the door will begin to open.

The door will open until the Open Limit is reached. If an obstacle is encountered (operator's light flashes four times) while the door is opening, the door will stop.

The operator's light will stay on for about five minutes after the door stops.

WALL STATION / WALL BUTTON



REMOTE KEYPAD



REMOTE CONTROL



#### Closing the Door

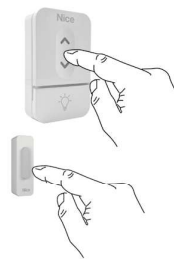
With the door in view, press the Wall Station/Wall Button or the button assigned to the operator on the remote control, or enter a valid access code and press START/STOP on a remote keypad.

When the operator is activated, the operator's light will turn on and the door will begin to close.

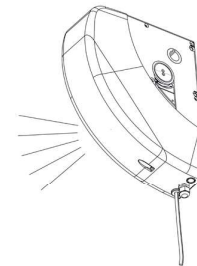
The door will close until the Close Limit is reached. If an obstacle is encountered (operator's light flashes four times), or the safety beam is interrupted (operator's light flashes three times) during closing, the door will stop, then re-open.

The operator's light will stay on for about five minutes after the door stops.

WALL STATION/WALL BUTTON



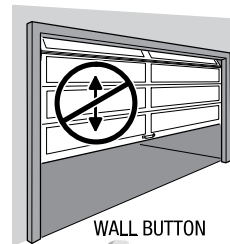
**NOTE: A FLASHING LIGHT INDICATES TROUBLE**



#### Stopping the Door Mid-travel

- 1) The door can be stopped immediately at any time by pressing the Wall Station/Wall Button, the remote control's pushbutton, or press the START/STOP button on a remote keypad (if the remote keypad was used to start the door).
- 2) The next time the operator is activated, the door will move in the opposite direction.

REMOTE CONTROL



WALL STATION



WALL BUTTON



REMOTE KEYPAD



REMOTE KEYPAD

## Vacation Lock for Additional Security

(Wall Station only)

- 1) Press the Wall Station's LOCK button to prevent remote controls from opening the door after the door is completely closed. The remotes can close the door, but not open it once closed. The door can still be opened or closed by using the Wall Station pushbutton or via the Nice G.O. app.

**NOTE:** To indicate that the Vacation Lock is enabled, the blue arrows will flash.

**NOTE:** If a transmitter is activated in an attempt to open the door while in vacation mode, the operator will beep and flash five times.

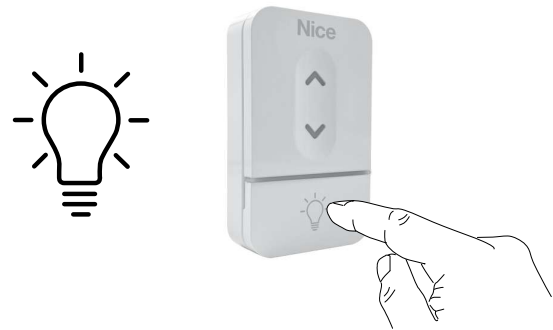
- 2) Press the Wall Station's LOCK button again to unlock and return the operator to normal operation.



## Controlling the Light Panel

(Wall Station only)

- 1) The Light Panel can be lit by pushing the Wall Station's LIGHT button. The light will remain on until the LIGHT button is pressed again or the operator is cycled.
- 2) If the Light Panel is on, pushing the Wall Station's LIGHT button will turn the operator's light off.



21

## Garage Door Maintenance

Weather conditions may affect the door operation which could require some re-setting of the operator's adjustments. Doors may swell and become heavier during wet periods, door hinges and rollers might bind during cold periods. To insure safe operation of the door, perform the following tests, including any additional test steps described.

### Every Month

- 1) With the door closed, pull the red release handle to disconnect the operator from the door and disengage the E-Lock.
- 2) From outside the garage, slowly open the door manually all the way, and then close it all the way. Notice if there is any binding, sticking or rubbing. The door should move smoothly in both directions.
- 3) Move the garage door halfway up. Carefully release the door and see if the door balances. It should stay in place. Close the door.

**NOTE:** If the garage door is unbalanced or the door travel isn't smooth, have a qualified garage door professional adjust or repair the door.

### After Servicing the Operator

- 1) To reconnect the operator, pull the gray handle.
- 2) Check **Safety Beam Operation** (page 14).
- 3) Perform the **Safety Reversal System Test** (page 15).

**⚠ WARNING ⚠**  
Garage door hardware (springs, cables, brackets, pulleys, etc.) are under extreme pressure and tension. **DO NOT ATTEMPT TO LOOSEN, TIGHTEN OR ADJUST ANY DOOR HARDWARE. CALL A QUALIFIED GARAGE DOOR INSTALLATION PROFESSIONAL!**

## Field Reset

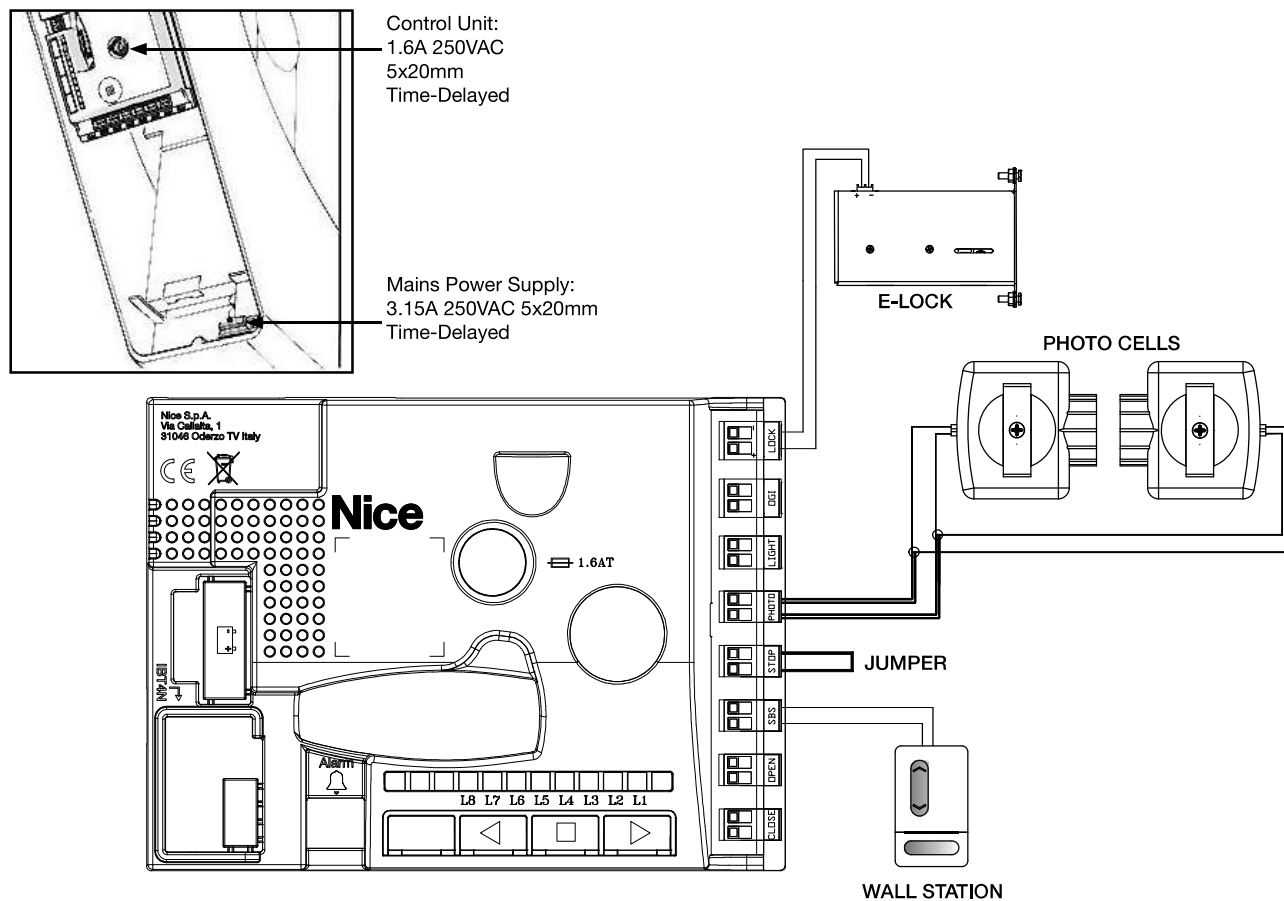
This procedure allows for restoring encoder to the default settings to enable the installation of operator with the door closed.

**NOTE:** This procedure must be performed with the operator on the workbench or floor.

- 1) Hold ▲ and ▼ simultaneously. LEDs L1-L8 will turn on.
- 2) When L1-L8 turn off and one LED turns on, release ▲ and ▼.
- 3) Hold ■ until the operator starts moving, indicating the encoder is reset. Once the encoder is reset, all LEDs will turn ON and then OFF, followed by L3 and L4 flashing every second indicating the limits must be set.

## Troubleshooting

LED	STATUS	REMEDY
L3+L4 flashing every second	Limits not set	Refer to Step 11 (p. 16) - Adjusting Open and Close Limits
L8 flashing every second	Operator is in OPEN Limit Settings mode (only in program mode)	Refer to Step 12 (p. 17) - Set OPEN Limit Using On-Board Buttons
L1 flashing every second	Operator is in CLOSE Limit Settings mode (only in program mode)	Refer to Step 12 (p. 17) - Set CLOSE Limit Using On-Board Buttons
L8 is ON	Door is fully open	
L1 is ON	Door is fully closed.	
Operator light flashes 2 times; door reverses	Safety Beam blocked	Check for obstacles. Align the safety beams.
Operator light flashes 3 times; door reverses or won't open or close	Force intervention	Check for obstruction or binding of the garage door. Perform a field reset if necessary.
Operator light flashes 4 times; door does not move	STOP terminal jumper missing	Ensure jumper on STOP terminals is installed
Operator light flashes 5 time; door does not move	Control unit error	Wait at least 30 seconds before giving another command. If the error persists, control board should be replaced.
Operator light flashes 6 times; door does not move	Maximum number of cycles per hour has been reached	Wait a few minutes before attempting to open door.
Operator flashes 7 times; door does not move	Internal electrical error	Power cycle the operator, then try giving a command again; if the problem persists there is a fault with the control board or motor wiring. Perform any necessary checks and replacements.
Operator flashes 8 times; door does not move	Motor has received multiple simultaneous commands	Power cycle the operator
L5 flashes rapidly	Memory error	
L6 flashes rapidly	Automatic force search procedure pending	
All LEDs are OFF	Normal operation (door not in open or close position)	



## FCC & IC Notice

This device complies with Part 15 of the FCC Rules and Industry Canada license exempt standard(s). Operation is subject to the following two conditions:

- 1) This device may not cause harmful interference, and
- 2) This device must accept any interference received, including interference received that may cause undesired operation.

Le présent appareil est conforme aux CNR d'Industrie Canada applicables aux appareils radio exempts de licence. L'exploitation est autorisée aux deux conditions suivantes:

- 1) l'appareil ne doit pas produire de brouillage, et
- 2) l'utilisateur de l'appareil doit accepter tout brouillage radioélectrique subi, même si le brouillage est susceptible d'en compromettre le fonctionnement.

This Class B digital apparatus complies with Canadian ICES-003

Cet appareil numérique de la classe B est conforme à la norme NMB-003 du Canada.

This equipment has been tested and found to comply with the limits for a Class B digital device, pursuant to Part 15 of the FCC Rules. These limits are designed to provide reasonable protection against harmful interference in a residential installation.

This equipment generates, uses, and can radiate radio frequency energy and, if not installed and used in accordance with the instructions may cause harmful interference to radio communications. However, there is no guarantee that interference will not occur in a particular installation. If this equipment does cause harmful interference to radio or television reception, which can be determined by turning the equipment off and on, the user is encouraged to try to correct the interference by one or more of the following measures:

- Reorient or relocate the receiving antenna.
- Increase the separation between the equipment and receiver.
- Connect the equipment into an outlet on a circuit different from that to which the receiver is connected.
- Consult the dealer or an experienced radio/TV technician for help.



## Limited Warranty

This Nice product is warranted to the original consumer against defects in material and workmanship by Nice North America LLC:

MODEL	ELECTRONICS & BATTERY	MECHANICAL	MOTOR
1421J-01	1 year	5 years	Lifetime
1461J-01			

This product is warranted to the original consumer against defects in material and workmanship for the periods mentioned above. Nice North America will repair, or at its option, replace, any device that it finds requires service under this warranty, and will return the repaired or replaced device to the consumer at Nice North America's cost. Devices must be sent to Nice North America for service at owner's expense. This warranty does not apply to damage to the product from negligence, abuse, abnormal usage, misuse, accidents, normal wear or tear or due to failure to follow Seller's instructions, or arising from improper installation, storage or maintenance. In no event will Nice North America be responsible for incidental, compensatory, punitive, consequential, indirect, special or other damages. The remedies provided by this warranty are exclusive. Some states do not allow the exclusion or limitation of incidental and consequential damages, so the above limitation or exclusion may not apply to you. Any warranties implied by law are limited to the time periods set forth above. Some states do not allow limitations on how long an implied warranty lasts, so the above limitation may not apply to you. This warranty gives you specific legal rights, and you may also have other rights which vary from state to state.

For warranty service and shipping instructions please contact Nice North America Technical Services at 760-438-7000. Prior to a Return Authorization number being approved and generated, troubleshooting will be required with a Nice North America technical services representative. In order to be protected by this warranty, save your proof of purchase or formal bill of sale as it may be required should service be needed. Contact Nice North America Technical Services for troubleshooting and consideration of a Return Authorization and other important details. For additional information on our warranty policies please reference <https://niceforyou.support/>

## Warning

**Changes or modifications not expressly approved by the manufacturer could void the user's authority to operate the equipment.**

## **HOW TO ORDER REPAIR PARTS**

**DEVANCO  CANADA**

19192 HAY ROAD, UNIT Q  
SUMMERSTOWN, ON, K0C 2E0

TOLL FREE **1-855-931-3334**  
[WWW.DEVANCOCANADA.COM](http://WWW.DEVANCOCANADA.COM)

**WHEN ORDERING REPAIR PARTS  
PLEASE SUPPLY THE FOLLOWING INFORMATION:**

- ✓ **PART NUMBER**
- ✓ **DESCRIPTION**
- ✓ **MODEL NUMBER**